

ALTO I

NEARNESS OF YOU

193Z

Handwritten musical score for Alto I, titled "NEARNESS OF YOU" (193Z). The score consists of ten staves of music. It begins with a treble clef and a key signature of two sharps (F# and C#). The first staff contains the first measure of the melody. The second staff is marked with a boxed "A" and a circled "F" containing a treble clef. The third staff has a circled "B" and a circled "F" with a treble clef. The fourth staff is marked with a circled "C" and a circled "F" with a treble clef. The fifth staff is marked with a circled "D" and a circled "F" with a treble clef. The sixth staff contains the text "D.S. AL CODA" and a first ending bracket. The seventh staff is marked with a circled "CODA" and a circled "F" with a treble clef. The eighth and ninth staves continue the melody. The score includes various musical notations such as notes, rests, slurs, and dynamic markings like "mp" and "p". There are also handwritten annotations like "H" and "3".

NEARNESS OF YOU

1932

Musical staff with treble clef, key signature of two sharps (F# and C#), and a 4/4 time signature. It contains a series of six quarter notes: G4, A4, B4, C5, B4, A4. A dynamic marking of *mp* is present.

Musical staff with treble clef, key signature of two sharps, and a 4/4 time signature. It begins with a boxed section marker 'A'. The melody consists of quarter notes: G4, A4, B4, C5, B4, A4, G4, F#4, E4, D4. A dynamic marking of *mp* is present.

Musical staff with treble clef, key signature of two sharps, and a 4/4 time signature. It contains a series of quarter notes: G4, A4, B4, C5, B4, A4, G4, F#4, E4, D4. Dynamic markings include *mp* and *mf*. A fermata is placed over the final note.

Musical staff with treble clef, key signature of two sharps, and a 4/4 time signature. It begins with a boxed section marker 'B' and a circled 'S.'. The melody consists of quarter notes: G4, A4, B4, C5, B4, A4, G4, F#4, E4, D4. A dynamic marking of *p* is present.

Musical staff with treble clef, key signature of two sharps, and a 4/4 time signature. It begins with a boxed section marker 'C'. The melody consists of quarter notes: G4, A4, B4, C5, B4, A4, G4, F#4, E4, D4. A dynamic marking of *mp* is present.

Musical staff with treble clef, key signature of two sharps, and a 4/4 time signature. It begins with a boxed section marker 'D'. The melody consists of quarter notes: G4, A4, B4, C5, B4, A4, G4, F#4, E4, D4. A dynamic marking of *p* is present.

Musical staff with treble clef, key signature of two sharps, and a 4/4 time signature. It contains a series of quarter notes: G4, A4, B4, C5, B4, A4, G4, F#4, E4, D4. The text 'D.S. AL CODA' is written below the staff.

Musical staff with treble clef, key signature of two sharps, and a 4/4 time signature. It begins with a boxed section marker 'CODA'. The melody consists of quarter notes: G4, A4, B4, C5, B4, A4, G4, F#4, E4, D4. A dynamic marking of *p* is present.

Musical staff with treble clef, key signature of two sharps, and a 4/4 time signature. It contains a series of quarter notes: G4, A4, B4, C5, B4, A4, G4, F#4, E4, D4. A dynamic marking of *p* is present.

TENOR I

1932

NEARNESS OF YOU

Handwritten musical score for Tenor I of "Nearness of You" (1932). The score is written in G major (one sharp) and 4/4 time. It consists of ten staves of music. The first staff begins with a treble clef and a key signature of one sharp (F#). The score includes various dynamic markings such as *mp* (mezzo-piano) and *p* (piano), along with accents and slurs. Section markers A, B, C, and D are placed at the beginning of their respective staves. Performance instructions include "N.V." (No Vibrato) and "CODA". The piece concludes with a double bar line.

1932

NEARNESS OF YOU

Handwritten musical score for Tenor 2, titled "NEARNESS OF YOU" (1932). The score consists of ten staves of music. It includes various musical notations such as notes, rests, slurs, and dynamic markings (mp, p). There are also section markers labeled A, B, C, and D, and a "CODA" section. The score is written in a key with one sharp (F#) and a 4/4 time signature.

BARITONE

NEARNESS OF YOU

1932

Handwritten musical score for Baritone, titled "NEARNESS OF YOU" (1932). The score consists of ten staves of music. The first staff is the vocal line, starting with a treble clef and a key signature of two sharps (F# and C#). The second staff is the piano accompaniment, starting with a bass clef and the same key signature. The score is divided into sections labeled A, B, C, and D. Section A (measures 1-4) has a dynamic marking of mp. Section B (measures 5-8) has dynamic markings of mf and mp. Section C (measures 9-12) has a dynamic marking of mp. Section D (measures 13-16) has a dynamic marking of p. The score includes various musical notations such as notes, rests, slurs, and dynamic markings. There are also some handwritten annotations, including a circled 'S' and a circled 'F'. The piece concludes with a CODA section (measures 17-20) and a final staff with a double bar line and repeat signs.

TRPT. I

NEARNESS OF YOU

1932

Handwritten musical score for Trumpet I, measures 1-4. The score includes dynamic markings (mp, p), articulation (accents), and performance instructions (Cresc., N.V.).

Measures 1-4:
- Measure 1: **Cresc.**, **mp**, **F** (circled), **11** (written above the staff).
- Measure 2: **p**, **B** (circled).
- Measure 3: **mp**, **C** (circled), **3** (written below the staff).
- Measure 4: **D** (circled), **6** (written below the staff), **1.**, **2.**, **2.** (written below the staff), **D.S. AL COD.** (written below the staff).

Handwritten musical score for Trumpet I, measures 5-6. The score includes dynamic markings (p) and performance instructions (CODA).

Measures 5-6:
- Measure 5: **CODA** (circled), **5** (written above the staff).
- Measure 6: **3** (written above the staff), **p**.

NEARNESS OF YOU

1932

FLUG.

SOLO

A

NOODLE

DMA⁷ Bm⁷ Am⁷ D^{b9} GMA⁷ G^b F^o

F#m⁷ F#m⁷ B^{b7} B⁹ Em⁷ A⁷ b⁹

8

B

Em⁷ Em⁷ A⁷ DMA⁷ D⁷ Am⁷ D⁷

GMA⁷ G^b F#m⁷ B⁷ E⁹ B^{b9} Em⁷ A⁷ b⁹

C

5 SOLO Jam stay here in rest.
D Bm⁷ Em⁷ A⁷

D

DMA⁷ Bm⁷ Am⁷ D⁷ G Em⁷ F^o F#m⁷ D^{#o} Em⁷ A⁷

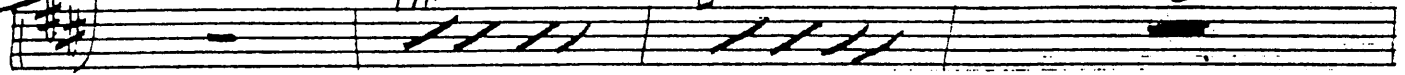
1. D A⁷ b⁹ Em⁷ A⁷ b⁹ 2. D C⁹ D D.S. AL COA

CODA

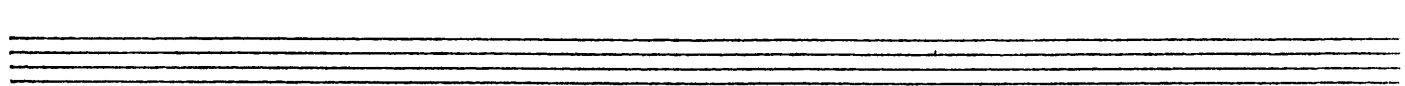
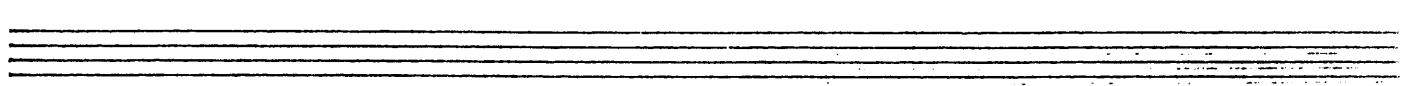
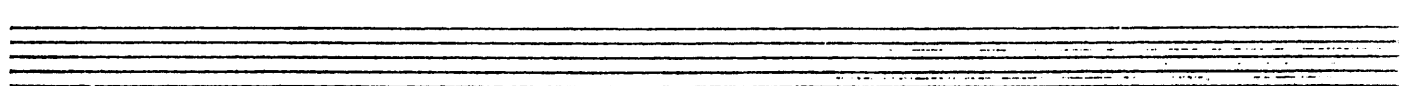
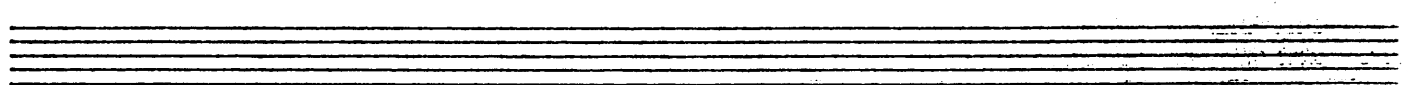
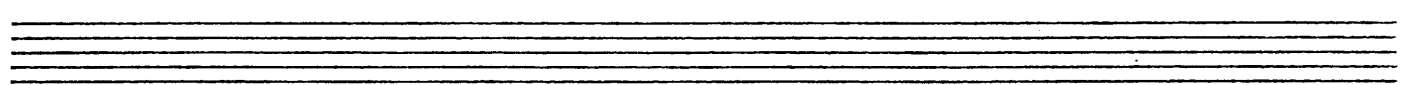
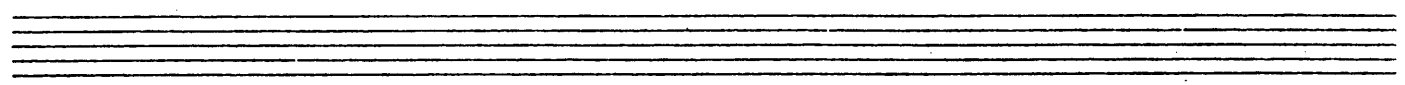
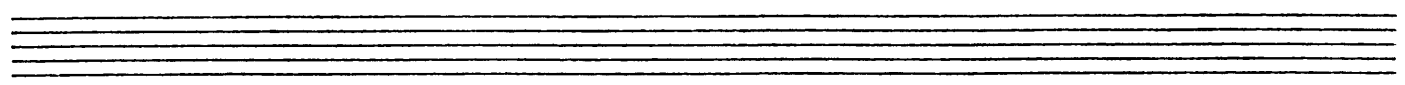
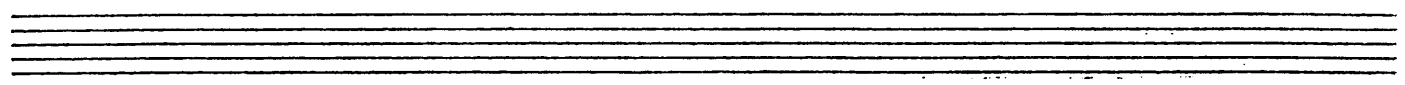
Am^b

B⁷

6



DMA⁷ AD-LIB



Trumpet 2

TRPT. 3

NEARNESS OF YOU

1937

U.S.C.
MP

MP

B

C

D

D.S. AL CODA

CODA

P

TRPT. 4

NEARNESS OF YOU

1932

Musical score for trumpet 4, measures 1-16. The score is written on a grand staff with treble and bass clefs. It includes dynamic markings such as *mp* and *p*, and performance instructions like *UNIS.* and *N.V.*. Section markers A, B, C, and D are indicated with boxes and arrows. Measure numbers 8, 16, and 3 are written above the staff. The key signature is one sharp (F#).

D.S. AL CODA

Musical score for trumpet 4, measures 17-20. This section is marked *CODA* and includes dynamic markings like *p*. It features a triplet of eighth notes in measure 17 and a triplet of eighth notes in measure 18. The key signature remains one sharp (F#).

BONE I

NEARNESS OF YOU

1932

Handwritten musical score for the piano and saxophone parts of "Nearness of You" by Cole Porter. The score is written on a grand staff with a treble clef and a key signature of one flat (B-flat major). The tempo is marked as *mp* (mezzo-piano). The score is divided into sections labeled A, B, C, D, and CODA. Section A includes a piano part with a 6-measure rest and a saxophone part with a melodic line. Section B includes a piano part with a 6-measure rest and a saxophone part with a melodic line. Section C includes a piano part with a 3-measure rest and a saxophone part with a melodic line. Section D includes a piano part with a 6-measure rest and a saxophone part with a melodic line. The score concludes with a CODA section. The saxophone part is marked with "WISAX'S" and "N.V.". The piano part is marked with "D.S. AL CODA".

BONE 2

NEARNESS OF YOU

1932

BONE 3

NEARNESS OF YOU

1932

Musical staff with notes and a slur. The notes are: G4, A4, B4, C5, B4, A4, G4.

Musical staff with a box labeled 'A' and a double bar line. The notes are: G4, A4, B4, C5, B4, A4, G4.

Musical staff with notes and a slur. The notes are: G4, A4, B4, C5, B4, A4, G4.

Musical staff with a box labeled 'B' and notes. The notes are: G4, A4, B4, C5, B4, A4, G4.

Musical staff with a box labeled 'C' and notes. The notes are: G4, A4, B4, C5, B4, A4, G4.

Musical staff with a box labeled 'D' and notes. The notes are: G4, A4, B4, C5, B4, A4, G4.

Musical staff with notes and a slur. The notes are: G4, A4, B4, C5, B4, A4, G4.

Musical staff with notes and a slur. The notes are: G4, A4, B4, C5, B4, A4, G4.

LODA

1932

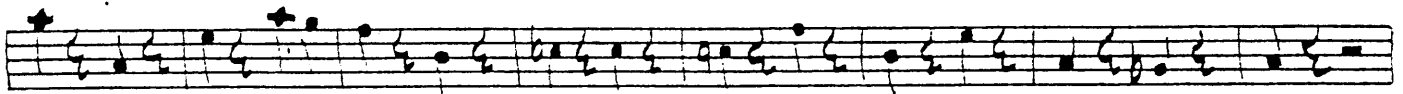
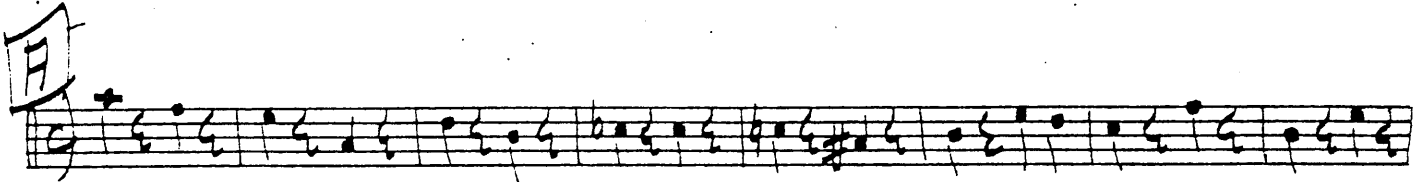
NEARNESS OF YOU

Handwritten musical score for the piece "Nearness of You". The score is written on ten staves. The first staff contains the title "NEARNESS OF YOU". The second staff begins with a treble clef, a key signature of one flat (B-flat), and a common time signature (C). The music consists of a single melodic line with various notes, rests, and slurs. Dynamic markings include *mp* (mezzo-piano) and *p* (piano). There are several boxed section markers labeled A, B, C, and D. A circled treble clef is also present. The score includes repeat signs and a double bar line with a repeat sign. The text "D. S. AL CODA" is written on the seventh staff. The word "CODA" is written in a box on the eighth staff. The number "10" is written below the eighth staff. The piece concludes with a double bar line and a key signature change to one sharp (F#).

BASS

NEARNESS OF YOU

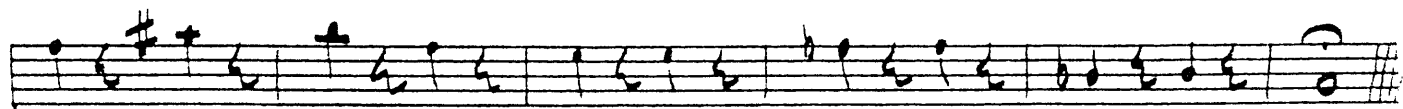
1932



D PLAY LETTER **D** IN 4



CODA



GUITAR

NEARNESS OF YOU

193Z

C G⁷ sus. G⁷ b9 E^m A⁷ b9 G⁷ sus. G⁷ b9

3

C^{maj7} A^m E^m C⁷ b9 F^{maj7} D^m E^b

E^m C^{#0} D^m G⁷ E^m A⁷ b9 A⁹ D^m G⁷ b9

C^{maj7} C⁰ G^m G^m G⁰⁰ A^m D^m E^b

E^m A⁷ b9 D^m G⁷ b9 C B^b9 C

3) (S)

Dm7	Dm7 G7	Cmaj7 C7	Gm7 C7b9 C7
		#	#

Fmaj7 Fb	Em7 A7	D9 Ab9	Dm7 G7b9
	+		

11

Cmaj7 Am7	Gm7 C7 Bb0	Am7 Dm7 G	F#0 Ebo
			# b +



Em7 A7b9	Dm7 G7b9	C Am7	Dm7 G7
+	#		

Cmaj7 Am7	Gm7 C7	F Dm7	Ebo

1.

Em ⁷ C# ⁰	Dm ⁷ G ⁷	Em ⁷ A ⁷ b ⁹	Dm ⁷ G ⁷ b ⁹

2.

		D.S. AL CODA	
C B ^b 9	C		

CODA

Dm ⁷ G ⁷	Gm ⁶	A ⁷	Dm ⁷

G ⁷ G ⁷ <u>sus</u> F ⁰	Em ⁷ b ⁵	A ⁷	D ⁹

G ⁷ G ⁷ <u>sus</u> G ⁷	A ⁰ ma ⁷	D ^b ma ⁷ 9	CMA ⁷ 9

DRUMS

193Z

NEARNESS OF YOU

W. RIT STUART ARR.

Musical staff with notes and rests. Includes a dynamic marking *mp* in a circle.

A

Musical staff with notes and rests.

B

Musical staff with notes and rests.

C

Musical staff with notes and rests.

D

Musical staff with notes and rests.

D.S. AL CODA

CODA

Musical staff with notes and rests.

Empty musical staff.

Empty musical staff.

NEARNESS OF YOU

1932

PIANO

C G^{sus} G⁷b⁹ E^m F⁷b⁹ G^{sus} G⁷b⁹

C^{MAJ}⁷ A^m⁷ G^m⁷ C⁷b⁹ F^{MAJ}⁷ D^m⁷ E^b6

E^m⁷ C#0 D^m⁷ G⁷ E^m⁷ F⁷b⁹ F⁹ D^m⁷ G⁷b⁹

C^{MAJ}⁷ C0 G^m⁷ G^m⁷ 800 A^m⁷ D^m⁷ E^b6

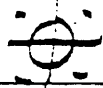
E^m⁷ F⁷b⁹ D^m⁷ G⁷b⁹ C B^b9 C

B.S.

Handwritten musical notation for the first system, consisting of a treble clef staff with a common time signature (C) and a bass clef staff. The treble staff contains four measures of music, each with a slash indicating a whole note. The bass staff contains four measures of music, each with a slash indicating a whole note. Chord symbols are written above the treble staff: Dm7, Dm7 G7, CMaj7 C7, and Gm7 C7b9 C7. Fingering numbers (1-4) are written below the bass staff notes.

Handwritten musical notation for the second system, consisting of a treble clef staff with a common time signature (C) and a bass clef staff. The treble staff contains four measures of music, each with a slash indicating a whole note. The bass staff contains four measures of music, each with a slash indicating a whole note. Chord symbols are written above the treble staff: FMaj7 Fb, Em7 A7, D9 Ab9, and Dm7 G7b9. Fingering numbers (1-4) are written below the bass staff notes.

Handwritten musical notation for the third system, consisting of a treble clef staff with a common time signature (C) and a bass clef staff. The treble staff contains four measures of music, each with a slash indicating a whole note. The bass staff contains four measures of music, each with a slash indicating a whole note. Chord symbols are written above the treble staff: CMaj7 Am7, Gm7 C7 Bb0, Am7 Dm7 G, and F#0 Eb0. Fingering numbers (1-4) are written below the bass staff notes.



Handwritten musical notation for the fourth system, consisting of a treble clef staff with a common time signature (C) and a bass clef staff. The treble staff contains four measures of music, each with a slash indicating a whole note. The bass staff contains four measures of music, each with a slash indicating a whole note. Chord symbols are written above the treble staff: Em7 A7b9, Dm7 G7b9, C Am7, and Dm7 G7. Fingering numbers (1-4) are written below the bass staff notes.

Handwritten musical notation for the fifth system, consisting of a treble clef staff with a common time signature (C) and a bass clef staff. The treble staff contains four measures of music, each with a slash indicating a whole note. The bass staff contains four measures of music, each with a slash indicating a whole note. Chord symbols are written above the treble staff: CMaj7 Am7, Gm7 C7, F Dm7, and Eb0. Fingering numbers (1-4) are written below the bass staff notes.

1.

Em ⁷ C# ⁰	Dm ⁷ G ⁷	Em ⁷ A ⁷ b ⁹	Dm ⁷ G ⁷ b ⁹
---------------------------------	--------------------------------	---	---

2.

C B ^b ⁹	C	D.S. AL CODA	
-------------------------------	---	--------------	--

CODA

Dm ⁷ G ⁷	Gm ⁶	A ⁷	Dm ⁷
--------------------------------	-----------------	----------------	-----------------

G ⁷ G ⁷ <u>SUS</u> F ⁰	Em ⁷ b ⁵	A ⁷	D ⁹
---	--------------------------------	----------------	----------------

G ⁷ G ⁷ <u>SUS</u> G ⁷	A ⁰ MA ⁷	D ^b MA ⁷ 9	CMA ⁷ 9
---	--------------------------------	----------------------------------	--------------------

VOICE

193Z

NEARNESS OF YOU
WALT STUART ARR.

Musical staff with a treble clef, a 3-measure rest, and a quarter note G4. A circled '3' is written above the staff.

IT'S NOT THE

Musical staff with a treble clef and the handwritten text "SING 16 BARS" written across the staff.

Musical staff with a treble clef and the handwritten text "SING RELEASE" written across the staff.

Musical staff with a treble clef and the lyrics "SOFT LIGHTS TO EN-CHANT ME IF YOU'LL ON-LY GRANT ME THE".

Musical staff with a treble clef and the lyrics "RIGHT TO HOLD YOU EV-ER SO TIGHT".

Musical staff with a treble clef and the lyrics "TO HOLD YOU EV-ER SO TIGHT". A stamp "GODDARD" is visible on the right side.

Musical staff with a treble clef and the lyrics "AND TO FEEL IN THE". A stamp "GODDARD" is visible on the left side.

Musical staff with a treble clef and the lyrics "NIGHT THE NEAR-NESS OF YOU JUST TO FEEL IN THE".

Musical staff with a treble clef and the lyrics "NIGHT THE NEAR-NESS OF YOU".